

THINCAST™

A rainscreen product with the beauty and character of concrete

Durable

The resilience and permanence of precast concrete in a lighter-weight rainscreen application

Available

Standard size panels with shorter lead times to meet tight construction schedules

Flexible

Vertical and horizontal panel installations create unique facades

ThinCast™ - a fast and cost efficient way to achieve the sharp, clean lines and iconic surface of real concrete.

Scan here for more information



- Installer-friendly system qualified for fit and finish with off-the-shelf bracket systems
- All panels 3/4" thick; panel weight is ~10 lbs/ft²
- Tested to meet applicable building codes and standards for rainscreen applications

STANDARD PANEL SIZES



48" x 48"



48" x 24"



48" x 18"



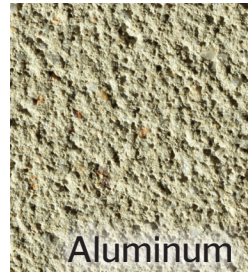
72" x 48"



72" x 24"



72" x 18"



Aluminum



Stone



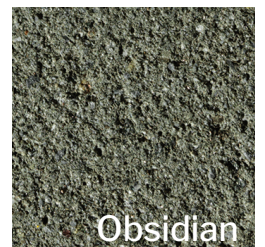
Alabaster



Khaki



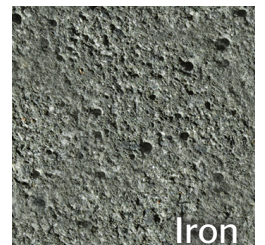
Sterling



Obsidian



Pewter



Iron

THE VERSATILITY OF
PRECAST CONCRETE
NOW IN A RAINSCREEN